

Catoctin Area Turners

Issue Number 3 April 2009



April Program

Given that spring is arriving just a bit later than hoped, we're going to delay the Tree Identification program that we were planning for the April meeting until our May meeting. Tom Boley has graciously stepped in and agreed to do a demonstration for our April meeting showing how to make duplicates of spindle turnings, should be interesting and useful!

Upcoming Program Information!

The May meeting program will focus on tree/wood identification and include a walk within the nature preserve for some practical experience, this will be given by Ron Circe. He'll show us ways to identify wood using bark, leaves, and other features.

Future programs will include pen turning, a demonstration of the Termite hollowing tool, texturing, ornaments, and other interesting topics. As always, if you have an idea for a program or would be willing to help by presenting at a future meeting, please get with me via phone, email, or at a meeting. See you on Thursday night!

CAT Officers

President

Tom Boley
540-338-1718
tboley@erols.com

Vice President

Joe Flanigan
703-723-8172
flaniganwoodworks@yahoo.com

Secretary

Bob Parson
703-724-1879
rparson@gmail.com

Operations Director

Dale Bright
540-751-9121
frog21man@verizon.net

Treasurer

Mark Kaplan
703-608-6914
markap6@comcast.net

Program Director

David Martin
703-669-5938
davemartin88@gmail.com

Newsletter Editor

Robert Peesel
703-430-6755
woodbodger@gmail.com

Table Of Contents

Program Information.....	1
Officers.....	1
Call of the Lathe.....	2
From the editor.....	3
Club News.....	4
Calendar.....	4
Arbor Day!.....	5
WoodCraft Information.....	5
Pennies for Peanut.....	6
Meeting Minutes.....	6
Pennies for Peanut.....	6
Insurance Information.....	7
Logo Contest.....	8
Member Show and Tell.....	11

Remember our new meeting location at
Banshee Reeks Nature Preserve!

Our first meeting at Banshee Reeks Nature Preserve worked very well indeed. Thanks to those who came early to help set up and to those who stayed at the end to help clean up. I heard nothing but positive comments about the facility. However, we all sure found out that it is mighty dark at BRNP by the time the meeting ends! Ron Circe', the park manager and a member of CAT, is going to work on the lighting issue for us but you might want to bring a flashlight to the next meeting. If you had trouble finding the park and the classroom, please call me at 540-338-1718 and I'll try to give you more detailed directions. I am hoping for a really good turn-out in April.

Thanks to Debbie Woods for volunteering to manage the Silent Auction and to Mark Duffell for volunteering to manage the Raffle. Both events worked very well and I sure do appreciate their efforts. And a special thanks to Mark for his invitation to the annual spring bull sale at Whitestone Farm. Several members were able to attend and found it very interesting. As to the Silent Auction, I would like to invite anyone to bring in something which would be suitable for the members. The most common things I have seen at a woodturning silent auction are pieces of wood, but I have also seen stacks of old woodturning magazines, tools, and even occasionally stuff which isn't directly applicable to woodturning. It is a great way to share stuff with other members which might otherwise end up in the trash. And we will continue to provide some pretty good stuff for the raffle. For March, we had three turning blocks and three turning tools.

Thank you to the many who responded to the need to raise funds for little Alex Baker, also known as Peanut to his family. He has had severe medical issues since birth and his family held a fund-raising dinner at the Hamilton Firehouse as well as a silent auction. Some of our members attended the dinner and several donated turned wood items for the silent auction. They raised nearly \$6000 to help defray Peanut's medical bills. Thanks to all of you who participated. It was a great way to start out a woodturning club. Well done.

We have been fortunate in having three of our members bring in snacks for our first three meetings. I got a call from another member asking if anyone was coordinating that as she would like to bring in something for the April meeting. No one is coordinating it as I just think that is way too administrative. Let's just leave it like it is – if someone wants to bring in something, terrific, but if no one brings in anything, then that is fine, too. For those of you who may want to bring in a snack of some kind for our monthly meetings, we will all be most appreciative!

This month's program was going to be what may be called "a walk in the woods." Ron Circe' was going to take us on an informative walk to identify trees. My favorite response to people when they ask where I get my wood is to say, "Heck, the stuff grows on trees." Well, that is really where it begins and Ron will help us to identify what is what in the woods. I can tell a Dogwood "by its 'bark'," but the others are more difficult. Knowing that the best time to harvest a tree for natural edge bowls is in the winter is fine, but what kind of tree are you seeking and how do you identify it without leaves? When The Call of the Lathe is ringing in your ears during the cold months, do you go to Woodcraft to buy a turning block with a label or are you able to go for a walk and know what you are seeing on the hoof? The way it looks now, Ron would prefer to wait a little longer when the leaves are out as that will enable him to show us both the bark and the leaves. We may have an alternate program if the leaves aren't out, and then wait another month or so for the tree walk.

The editor's bench

Robert Peesel

Welcome back to the editor's bench. This last month has made me think quite a bit about a topic that none of us is too fond of but for most of us is a necessary evil. No, it's not taxes (oops, I haven't done mine yet...any accountants in the group?) it's sanding. As I mentioned in the last newsletter, I have been working on a rocking chair in the style of Sam Maloof. As I worked on this chair, my mind occasionally drifted to woodturning. I know, I know, what could the one have to do with the other? Well, like woodturning, this chair started out with unfinished, rough planks of wood. We were told that this wood was Curly Maple, but due to the roughness of the edges, we really weren't sure what kind of figure the wood would have. We would have to keep our fingers crossed and hope that what we uncovered would be satisfactory. Woodturning is exactly the same. We all start out with a block of wood and have no idea what we will uncover until we apply steel to the wood. If everything goes our way, that steel will reveal what we had hoped would be there all along.

Just as in woodturning, the rough wood was then roughly shaped on a bandsaw before the real work could begin. As we started cutting, we noticed that the figure seemed to be running through the entire board and hoped we were correct. It was exactly same feeling I get when taking a roughing gouge to a log and removing the rough outside.

Once the rough cutting was done, I moved on to finer cutting tools to help refine the chair towards its' final shape. Sounding familiar? Also, like turning, I used CA glue to help hide joints, voids, etc.

Once the chair was in its' final shape I wasn't finished. I had to sand it. Did you remember that sanding was the main topic of this article? There is between 20 and 25 hours of sanding in this chair. I started at 100 grit on an orbital sander and moved grit by grit up to 320. Once I reached 320, I then used an Abralon pad with a grit of 500. This pad



made all the machine marks I had missed, stand out. I then went back to whatever grit necessary to remove those marks and worked back up to the Abralon pad in order to make sure the wood was ready for the finish. I spent many many hours going back and resanding.

What emerged from all of this work, was a piece that I was truly proud of. It wasn't uncommon for me to skim a bit on my turnings by saying 'no one will see that' or 'that is smooth enough'. By working this way, I never truly made a piece that I was proud of. If it elicited oohs and ahs from non-turners, then it was 'good enough'.

After this chair, I don't think I will take sanding, or for that matter any stage of a project, for granted any more. I enjoyed the feeling of actually being proud of my work too much to take shortcuts.

Bob

Don't forget to bring a little (or a LOT!) cash for the Silent Auction and Raffle!

Upcoming Calendar

2009

April	Spindle Skills
May	Tree Identification
June	CAT picnic
July	TBD
August	TBD
September	TBD
October	TBD
November	TBD
December	CAT Winter Party

2010

January	TBD
February	TBD
March	TBD

Meeting Information

Remember, all Catoctin Area Turner meetings will be at the Banshee Reeks Nature Preserve. Meetings will start at 6:30 at the Education Annex which is across from the visitor center within the Preserve.

From Leesburg, BRNP can be reached by going south on US15 towards Warrenton *only about a quarter mile from the Leesburg Bypass and then *make a left on Evergreen Mills Rd. (Route 621) and travel south *about 5.3 miles*. After passing the entrance to the Loudoun County Landfill on the right, take the next right, Woods Road and travel about a mile to the entrance to the park on the left. Woods Road is gravel but passable for all types of vehicles. *Once in the Preserve,* stay on the paved road until reaching the parking for the visitor center and annex on the left. The Education Annex is the white building to the right of the large stone Visitor Center. The Annex entrance is on the back side of the building. Look forward to seeing you there. Directions from other locations are found at the link below.

From Gilbert's Corner, drive north on Rt 15 for 4.3 miles and turn right on Oatlands Mill Road. Go straight across Gleedsville Road and watch for the park entrance on the right.

From the southeast, take Rt 50 west to Evergreen Mill Road and turn right. Follow Evergreen Mill Road about 8 miles to The Woods Road and turn left. The park entrance will be about a mile along on the left.

Banshee Reeks Nature Reserve is located at:
21085 The Woods Road
Leesburg, VA 20175
703-737-7843

You can find out more information about the Preserve at the following links:
<http://www.loudoun.gov/Default.aspx?tabid=884>
<http://www.bansheereeks.org/>

Loudoun Arbor Day Celebration, April 18th

The 21st Annual Loudoun Arbor Day Celebration will be held Saturday, April 18th from 10 a.m. to 3 p.m. at Oatlands, a national historic site just 5 miles south of Leesburg. Come and learn and enjoy the countless benefits that are associated with trees.

CAT has been invited to have a booth for a woodturning demonstration. We will have 2 lathes demonstrate with and tables for a turning display. We are being supplied a 10' by 10' tent with electricity.

There will be a sign up sheet, at the April meeting, for people to work the booth and for demonstrators. We will need six turners for the lathes and 6 members to man the booth. The turners must be a member of both CAT and the AAW. The booth personnel will answer questions, pass out brochures and keep an eye on the display.

We can sell turnings at this show but anyone selling must be present and VA sales tax must be collected.

In case of rain, we will set up the lathes inside the carriage house.

The rotation schedule will be:

Lathe 1 10:00 until 11:30 Lathe 2 10:00 until 12:00

Lathe 1 11:30 until 1:30 Lathe 2 12:00 until 1:30

Lathe 1 1:30 until 3:00 Lathe 2 1:30 until 3:00



Leesburg Plaza
512 E. Market
Leesburg, VA 20176
Phone: (703) 737-7880
Fax: (703) 737-6166
Leesburg@woodcraft.com

Sun: 9 am - 5 pm
Mon: 9 am - 9 pm
Tues: 9 am - 9 pm
Wed: 9 am - 9 pm
Thur: 9 am - 9 pm
Fri: 9 am - 9 pm
Sat: 9 am - 6 pm

Organizations such as the Catoctin Area Turners would not exist if it weren't for the kindness of their sponsors. We are blessed to have the Leesburg, Virginia Woodcraft store supporting us and our activities. If it wasn't for their initial kindness, the Catoctin Area Turners might still only be an idea. Please remember this and support them at every opportunity!

Monthly Meeting Minutes

03/12/2009

Banshee Reeks

Meeting called to order by President Tom Boley @ 6:30. Tom introduced the silent auction, the first of which was held tonight. He asked folks to bring in anything pertaining to woodturning or woodworking for auctions at future meetings. President Boley also showed three turning blanks and three gouges purchased from Woodcraft to be entered into the raffle for this evening. President Boley discussed the steps CAT has been taking to benefit Alex "Peanut" Baker, a local 9 month old who has serious medical problems. Several CAT members have turned items to be sold at silent auction to benefit Peanut.

The Certificate of Incorporation was granted by the Commonwealth of Virginia on February 18, 2009, and the paperwork is being completed for 501c(3) status.

Officer Reports:

Newsletter: Bob Peesel completed the second newsletter which was sent out a few days ago. Bob asked members to submit any ideas for a club logo to him.

Program: Dave Martin discussed the planned program for next month, a tree identification session, and future program plans, as well as a club picnic tentatively scheduled for June 13, 2009.

Operations: Dale Bright requested that some folks come early to meetings to help set up the facility as well as asking members to pitch in to take down chairs, etc. at the end of our meetings. He also mentioned the upcoming CAT presentation on April 18th at Oatlands Plantation.

Treasurer: Mark Kaplan stated that the club funds are approximately \$1,000. The club bank account has been set up and Banshee reeks annual rental bill of \$260 has been paid.

Secretary: Bob Parson stated that the initial paperwork for the club is being compiled.

Club demonstration for tonight was made by CAT member George Carrigan who demonstrated an array of homemade turning tools.

PICNIC!

With the help of AJ Lewis, we are working on sorting out all the details for the Catoctin Area Turners summer picnic. WE are looking at holding this on Saturday, June 13 2009 at Banshee Reeks Nature Preserve. This is planned to be a pot-luck meal so that no one has to provide everything.

We will have lathes set up so that members can spend time turning and 'showing-off' their skills. Families are encouraged to come and enjoy the festivities.

We will have more information available as the details firm up.

"Pennies for Peanut"

Great participation by CAT members

For those who were able to provide something of turned wood for this silent auction to help raise funds for little Alex "Peanut" Baker, thank you very much. The family was very pleased at all which we in Catoctin Area Turners did to support them. Here are those who donated pieces:

Mike Enloe
Jeter Benbow
Debra Breton
Debbie Woods
Mark Duffell
Margaret Duffell
Ruth Bushara
Harriet Maloney
Don Maloney
Greg Kraning
George Carrigan
Lee Hanson
Woodcraft
Joe Furman
Tom Boley

Call for Programs and Demonstrators

In our first newsletter, we called for ideas and volunteers for future demonstrations and programs for our monthly meetings. We received some great input and even more importantly, volunteers for the terrific March program and some “tentative” volunteers for future meetings. Here are some of the ideas we received:

Pen Turning, Chuck Selection, Ornaments and Craft Sale items, High Gloss Finishing, Decorative Carving, Texturing/Chattering, Turning Green Wood, Segmented Turnings, Tree Identification, Tool Selection, Wood Selection, Bird Houses, Jigs & Tips.

You can see we have plenty of ideas, now we need help to line up presenters and demonstrators for some of these or other topics of interest. We're looking for these programs to last about 30 minutes or so to give time for questions. If you don't think you can fill out an entire program but are willing to take the lead to pull a session together, please volunteer. You can get help from others and help us out. These demonstrations will be key to keeping our members interest and to make the meetings enjoyable, informative, and useful so please consider pitching in. In the future, we may go outside the club to find topics and presentations from paid or at least partially paid presenters but we're not in position to do this yet. As always, if you have ideas or are willing to present, please get with our Program Director, Dave Martin at a meeting or via email or phone. If you know someone that is capable of presenting one of these or other topics, let Dave know as well and he'll approach the member for help and do the arm twisting!

Liability Insurance for Catoctin Area Turners

Our woodturning club has a policy of requiring anyone who will do any turning at any CAT event to be a member of the American Association of Woodturners. Through insurance available to each of us by mere membership in the AAW, officers and members are insured for \$1,000,000 liability for bodily injury to a non-member who happens to be injured during a CAT woodturning event. And if a member is injured, CAT, the officers, and the other members are still covered by this liability coverage.

There is also \$10,000 medical coverage for any non-member injured. If a demonstrator has a piece fly off the lathe and injure someone and the demonstrator is not a member of AAW, he or she is not personally protected but CAT is. Once again, please understand that it is important to CAT that anyone doing any woodturning at a CAT event must be a member of the American Association of Woodturners in order to protect CAT, the officers, and the members from liability. That is why we will continually stress AAW membership for anyone doing woodturning in a CAT demo as well as the CAT picnic, any skill enhancement sessions we may have, or any other event which is happening under the name of CAT.

Besides, AAW membership is very worthwhile

The CAT logo contest!

As we announced previously, we are looking for a LOGO! In the coming months we will be publishing all logo ideas presented to the club. As we procede we will start narrowing the selection until we decide on the logo which will represent our club. Remember, this is OUR club and we want to see ideas from everyone! It doesn't matter if you are an artist or not, if you have an idea for a logo sketch it out and let us publish it. Who knows, maybe one of the artists can take your rough sketch and turn it into the perfect logo.

Feel free to email logos and ideas to any of the officers listed at the end of the newsletter.

Below you will find the first batch of logos submitted for us to review. Please let us know which you like and which you don't.



Logo #1



Logo #2



Logo #3



Logo #4

www.robertscreative.net



Logo #5

www.robertscreative.net



Logo #6



Logo #7

www.robertscreative.net



Logo #8

www.robertscreative.net



Logo #9



Logo #10



Logo #11



Logo #12



Logo #13



Logo #14

Member Show and Tell

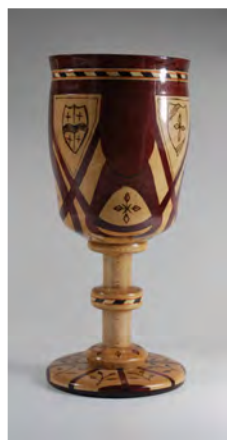


At this past meeting, not only did Tom Boley run an excellent meeting, he presented us with two terrific pieces. The first is a hollow form turned from a Maple Burl. Unfortunately, I was unable to hide the holes in the sides. Don't you hate it when the inside gets bigger than the outside?



What you can't see on the second piece is the fabulous texture of the Big Leaf Maple. It is not as smooth as the picture would suggest, in fact, it looks a bit like leather. I like it.

In an effort to fight the desire to turn thinner and thinner edges, Robert Peesel decided to see how thick he could make them!. This is a piece of walnut with a Tru-oil finish.



Chet Olson displayed these two drinking vessels. Unfortunately, I don't know what woods these are made of, so Chet, if you want to enlighten me again, I can post it next month! After looking at these two pieces, does anyone else get the feeling that partying at Chet's house might be a good time?



Tim Gregory turned this terrific piece from Maple and Cocobolo. The finial on the top makes me think of a sailboat every time I look at it.



Well, the Maloney's are at it again. It seems that every month we see each of them trying to top the other. Ah the joys of marital bliss. Don's entry into this contest is a bowl made from Tropical Almond while Harriet turned hers from Indian Rosewood with gold gilding on the rim. While I think this month it is a tie, I can't wait to see what they bring in next time!

Stefan Raab brought in a couple Hackberry pieces. I didn't even know there was a Hackberry tree! Stefan, that second piece must have been tough to turn as there is more air than wood once you get above the base. The benefit to turning something like that is that cutting air doesn't dull your tools nearly as quickly as cutting wood.

