

Catoctin Area Turners

Issue Number 4 May 2009



May Program

May 14th, 2009

Tree Identification Walk

Our May CAT meeting program will be led by Ron Circe, the manager of the Banshee Reeks Nature Preserve and a member of our club. Ron is going to lead a 30-45 minute walk along a path around the pond near the visitor center to talk about how to identify trees in their native settings which should help us learn to identify some of the “mystery” wood that we come across as turners. There are about 20 stations set up along this path with a placard to identify the species of tree and the identifying information. Ron will give us an overview and be able answer questions as we make the circuit. We'll also plan to talk about other methods such as comparing unknown wood samples to known wood samples under a magnifying glass or using a wood characteristic flow chart. This will also be an opportunity for members to talk about their own methods for identifying wood. Please dress accordingly for the weather and bring an umbrella if showers are forecast!

**New Membership cards
are available for all
members!
Pick yours up at the
meeting!**



Table Of Contents

Program Information.....	1
Officers.....	1
Call of the Lathe.....	2
Editor's Bench.....	3
Arbor Day Photos.....	3
Club News.....	4
Board Vacancy.....	4
WoodCraft Information.....	6
Picnic Flyer.....	7
Show and Tell.....	8

CAT Officers

President

Tom Boley
540-338-1718
tboley@erols.com

Vice President

Joe Flanigan
703-723-8172
flaniganwoodworks@yahoo.com

Secretary

Bob Parson
703-724-1879
rparson@gmail.com

Operations Director

Dale Bright
540-751-9121
frog21man@verizon.net

Treasurer

Mark Kaplan
703-608-6914
markap6@comcast.net

Program Director

David Martin
703-669-5938
davemartin88@gmail.com

Newsletter Editor

Robert Peesel
703-430-6755
woodbodger@gmail.com

**Remember our meeting location at
Banshee Reeks Nature Preserve!**

We are off to a great start. I am delighted that we have been so successful so early in our efforts to establish and develop a woodturning club for the area surrounding Leesburg and Loudoun County.

Since we are right smack dab in the middle of “no man’s land” between Apple Valley Woodturners, Capital Area Woodturners, and Mid-Maryland Woodturners, I think that we fill a definite need. This coming meeting will be our fifth and we have already gotten over 40 members, been incorporated by the Commonwealth of Virginia, and applied for non-profit organization status as a 501(c)3 corporation with the IRS. Your officers are working hard to ensure that we meet the needs of as many woodturners in this area as we can. We have several others who have volunteered to take on specific tasks within the club in support of our overall efforts and have great participation. With all that is going on, I urge all of you who have not officially “joined” Catoctin Area Turners to do so. It is through your dues and your personal participation that we are able to continue to be what this club should be and we welcome everyone who is interested in the craft.

Woodturning is a hobby for most, a business for some, and a joy for all. Having talked to many of you, I know that woodturning is a place to “lose yourself” for hours sometimes, getting away from everything else and focusing on making something round. That sure happens to me. Just choosing the

right piece of wood really gets me into it and I can spend hours perfecting a design on the lathe, suddenly looking at the clock and wondering where the time has gone!

While this can be something which we all enjoy doing alone, concentrating on technique or design, carefully making just “one more cut” in our efforts to perfect the surface of this latest piece, and then following up with sanding, finishing, and displaying our work, having a group of enthusiastic supporters encouraging us goes a long way in helping to make this truly a joyful effort. That is why CAT has so much value for all of us. I have only been a member of three woodturning clubs but have visited several and know that woodturners are all about helping others to learn the craft and improve their techniques. Never have I seen a group of folks more willing to share the “secrets” for success. Thanks to all of you for your support.

As we continue into Spring, many of you who have your shops in an ice cold garage all winter will be able to get back to the lathe. Throw the doors open wide and enjoy the weather now before the heat of Summer starts to limit your woodturning time once again. As the Call of the Lathe comes winging to your ears, heed the call and make the time to practice the craft. And if it gets just too hot or too cold, I’ll bet you can find a fellow woodturner who would be glad to have you come over to a shop with both heat and A/C to let you get in the turning you “need” to do. What a joy!

Upcoming Calendar

2009

May	Tree Identification
June	CAT picnic
July	Termite Tool
August	Custom Tools
September	Craft Shows
October	Ornaments
November	Piercing / Carving
December	CAT Winter Party

2010

January	TBD
February	TBD
March	TBD
April	TBD

Do you have wood you are not using? How about a tool you never pick up anymore? If so, we would love to have them for the silent auction! Bring them to the next meeting and we will make sure that they go to a good home.

Well, April is finished. While April has its low points (Tax day comes to mind), it also has its high points!

One of those high points was the Annual Arbor Day Festival at Oatlands Planation. The club had two tents to keep the sun off, and three lathes to keep the chips flying!

The entire day could not have been any better. The weather was absolutely perfect, the company couldn't have been any better, and, since my wife was there, I didn't feel guilty about not doing any of my Saturday chores. What more could one ask?

I did learn a very important lesson at the festival. I have been coming off of a hiatus from turning. I still enjoy it, but the muse seemed to have left me for a while.

Thankfully, that muse has returned

and I am in the process of making my workshop much more turner friendly. Much to my chagrin it turns out that turning is not quite like riding a bike, if you stop for a while, you DO need to spend some time getting your 'groove' back so to speak. Unfortunately, while demonstrating at the festival, no matter how hard I tried, I couldn't get into my 'groove'. I skipped my groove more often than a \$3 needle on a children's record player. The incident in question occurred while trying a Skewchigouge I had picked up from a discount table. This tool is designed to be easier to use than a skew, and since I have never mastered the skew, I thought I would give it a go.

So, knowing better, I put the end of a 12" piece of wood into the NOVA chuck and tightened it down,

completely neglecting to slide the tailstock up for support. Well, as I approached the wood with a Skewchigouge, I got a catch which pulled the wood right out of the chuck. Without thinking, I put the wood right back into the chuck and REALLY cranked it down tight.

Not two minutes later, the wood came flying out of the chuck and hit me square on the nose. Luckily, I had decided against wearing just eye protection and had instead packed my face shield to wear while demonstrating. That decision very easily saved me from at minimum, a bloody nose, but more likely a broken nose or worse if it had hit me in the eyes.

Please, please, please make sure you wear AND USE the proper equipment while turning.

Arbor Day Photos!



CAT Board of Directors Vacancy

Our vice president, Joe Flanigan, has made the difficult decision to resign from his position due to continuing health problems. I am sorry to lose him from the Board as he is the most enthusiastic woodturner I know. Joe got into turning through his employment at Woodcraft by making pens, graduated to bowls, and has done some very nice work for the short time he has been turning. It was a real pleasure to have him on the Board, but his health is adversely affecting his ability to attend

meetings. Dale Bright would like to move to the VP position, which leaves a vacancy for an Operations Director. In Article Four, Section 4 of our Bylaws, we have guidance regarding a vacancy on the Board:

"A vacancy in any office because of death, resignation, removal, disqualification, or otherwise, may be filled by the Board of Directors for the unexpired portion of the term." I would like to invite any member who is interested in being a part of your Board of Directors to offer to serve, or perhaps to nominate someone else to serve, as Operations Director. If more than one, we'll have an election. This

early in our first year of existence, I think that is the best way to do it.

The Operations Director is primarily responsible for setting up the meeting room each month and coordinating any outside woodturning activities such as that demo we did for Arbor Day. I'll tell you, it has been a lot of fun being a part of the inaugural team which is getting Catoctin Area Turners up and running. I hope there are those among you who would like to serve with us. We'll talk at the May meeting after our walk in the woods with Ron Circe.

Tom

Upcoming Program Information!

Hollowing Tool Workshop

We want to thank George Carrigan again for his demonstration at our March meeting on making and using homemade hollowing tools. George has offered to lead a workshop to make some of these tools if there is enough interest. This would be a hands on event to both learn and actually create a hollowing tool like George demonstrated at our meeting.

The workshop most likely would be held on a Saturday, if we can work out the logistics and there is enough interest. We also need someone with MIG welding and oxy acetylene torch experience to help with bending and fabricating the actual cold steel that is used for the tools. We have a MIG welding unit

available but are looking for someone with real experience to help us with the welding aspect of the tool and the workshop, if you have this talent, here's your chance to help out.

Costs are still to be worked out but if there is enough interest, we'll take the next steps to research the cost of the steel and other materials that would be needed. In the interim, if you have any spare or recently replaced planer or jointer blades that would be material for the tips for these tools, please hold on to them! Expressing interest isn't a firm commitment to attend, just an indication of whether we should take this further. If you are interested in participating in the workshop or helping with the welding/torch equipment, please let Dave Martin know. Dave's email is davemartin88@gmail.com or he can be reached at 703 727 7917.

Some of the ideas we would like to present are listed below. If anyone feels that they would like to share any skills they have in these areas, please contact Dave Martin at the number above.

- Texturing techniques- chattering, etc.
- Finishing techniques- on and off lathe, high gloss/friction/CA
- Square bowls or platters
- How to add inlays to a turning
- Chucks-so many choices?
- Turning green wood, translucent/thin turnings
- Wood selection, what wood to use when and why
- Birdhouses
- Turning screw threads (Don Maloney?)
- Turning a box with a friction fitted lid

Meeting Information

Remember, all Catocin Area Turner meetings will be at the Banshee Reeks Nature Preserve. Meetings will start at 6:30 at the Education Annex which is across from the visitor center within the Preserve.

From Leesburg, BRNP can be reached by going south on US15 towards Warrenton *only about a quarter mile from the Leesburg Bypass and then *make a left on Evergreen Mills Rd. (Route 621) and travel south *about 5.3 miles*. After passing the entrance to the Loudoun County Landfill on the right, take the next right, Woods Road and travel about a mile to the entrance to the park on the left. Woods Road is gravel but passable for all types of vehicles. *Once in the Preserve,* stay on the paved road until reaching the parking for the visitor center and annex on the left. The Education Annex is the white building to the right of the large stone Visitor Center. The Annex entrance is on the back side of the building. Look forward to seeing you there.

Directions from other locations are found at the link below.

From Gilbert's Corner, drive north on Rt 15 for 4.3 miles and turn right on Oatlands Mill Road. Go straight across Gleedsville Road and watch for the park entrance on the right.

From the southeast, take Rt 50 west to Evergreen Mill Road and turn right. Follow Evergreen Mill Road about 8 miles to The Woods Road and turn left. The park entrance will be about a mile along on the left.

Banshee Reeks Nature Reserve is located at:
21085 The Woods Road
Leesburg, VA 20175
703-737-7843

You can find out more information about the Preserve at the following links:
<http://www.loudoun.gov/Default.aspx?tabid=884>
<http://www.bansheereeks.org/>

Monthly Meeting Minutes 04/02/2009

Meeting called to order by President Tom Boley @ 6:45. Several guests and new club members were introduced and the silent auction and raffle commenced.

The calendar for the next few meetings was discussed, including the tree identification walk for May, as well as the club picnic scheduled for June 13.

As of today's meeting the club has approximately \$600 in the club bank account and 42 to 43 members. Arbor Day at the

Oatlands Plantation is scheduled for Saturday, April 8, and CAT will provide a woodturning exhibit.

The evening program consisted of a spindle turning demonstration which was presented by our President, Tom Boley. This was one of the more interesting demonstrations for our young club, made all the more intriguing due to the fact that Tom forgot to bring his mini lathe. The turning demo was handled with skill on the virtual lathe, and the evenings clean-up was made all the more efficient.

**Don't forget to bring a little (or a LOT!) cash for the
Silent Auction and Raffle!**

The Great CAT Logo Search!

As we announced previously, we are looking for a LOGO! In the coming months we will be publishing all logo ideas presented to the club. As we procede we will start narrowing the selection until we decide on the logo which will represent our club.

Remember, this is OUR club and we want to see ideas from everyone! It

doesn't matter if you are an artist or not, if you have an idea for a logo sketch it out and let us publish it. Who knows, maybe one of the artists can take your rough sketch and turn it into the perfect logo.

Feel free to email logos and ideas to any of the officers listed at the end of the newsletter.



For the first time ever!

Woodcraft is having a sale offering 20 percent off
Jet and *Powermatic* power tools.

This sale runs May 15 & 16 and Includes special orders.
Prices good from now thru sale day on special/back orders.



Leesburg Plaza
512 E. Market
Leesburg, VA 20176
Phone: (703) 737-7880
Fax: (703) 737-6166
Leesburg@woodcraft.com

Sun: 9 am - 5 pm
Mon: 9 am - 9 pm
Tues: 9 am - 9 pm
Wed: 9 am - 9 pm
Thur: 9 am - 9 pm
Fri: 9 am - 9 pm
Sat: 9 am - 6 pm

Organizations such as the Catoctin Area Turners would not exist if it weren't for the kindness of their sponsors. We are blessed to have the Leesburg, Virginia Woodcraft store supporting us and our activities. If it wasn't for their initial kindness, the Catoctin Area Turners might still only be an idea. Please remember this and support them at every opportunity!

The First Annual

CATOCTIN AREA TURNERS



Where: Banshee Reeks Nature Reserve
21085 The Woods Road
Leesburg, VA 20175

When: June 13, 2009

Time: 11:00am – 5:00pm

To ensure we have a variety of delicious foods please bring the food item listed next to the letter corresponding with the first letter of your last name.

A - C Bread/Rolls
D - J Salad/Side dish
K-N Desert
O-R Beverages
Q-Z Paper Products

We encourage members of the Catoctin Area Turners **AND** the American Association of Woodturners to bring their mini-lathes and stands to set up and do some turning in the morning, then eat, and then turn some more!

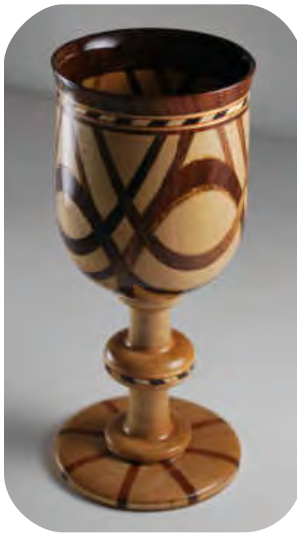
Please contact AJ Lewis with any additional ideas or questions at l.adriane@gmail.com or 703-727-5244.



Show and Tell

We had some terrific pieces for show and tell this month.

Don Taylor brought in this piece of white oak. Looks to me like he had a little help hollowing it out.



Chet Olsen brought in another goblet for us to look at. This piece is made from Maple and Black Walnut. Chet, I think you should create a presentation for us describing how you get all those pieces together!

Debra Breton brought this Cherry vessel in for us to look at. I have always loved the contrasting look of the Cherry heartwood and sapwood.



Don Maloney showed us this walking stick. The stick was too big for a picture, but look at the beadwork on the handle.

Way to go everyone!

